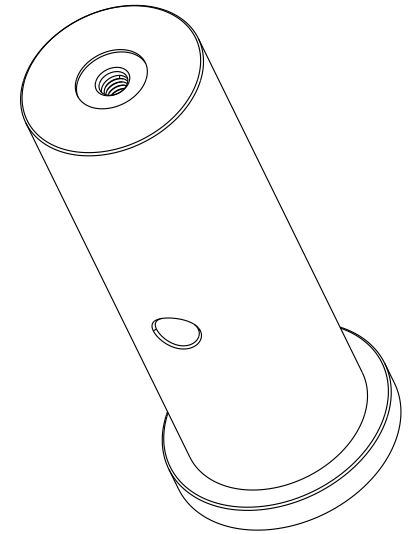


| 型号 | L0 | M0(M4螺牙) | M0(M6螺牙) |
|----------|---------|--------------------|------------------|
| CFP1-S | 25.4mm | M4X0.7 ∇ 12 | M6X1 ∇ 12 |
| CFP1.5-S | 38.1mm | M4X0.7 ∇ 12 | M6X1 ∇ 15 |
| CFP2-S | 50.8mm | M4X0.7 ∇ 12 | M6X1 ∇ 15 |
| CFP2.5-S | 63.5mm | M4X0.7 ∇ 12 | M6X1 ∇ 15 |
| CFP3-S | 76.2mm | M4X0.7 ∇ 12 | M6X1 ∇ 15 |
| CFP3.5-S | 88.9mm | M4X0.7 ∇ 12 | M6X1 ∇ 15 |
| CFP4-S | 101.6mm | M4X0.7 ∇ 12 | M6X1 ∇ 15 |



| | | | |
|--------------------------------------------------------------------------|------------|------------------|-----|
| DRAWING PROJECTION \rightarrow | | YiiZeeLABS | |
| DATE | 04/16/2025 | | |
| For reference only — not intended for manufacturing. | | | |
| | | MATERIAL # | REV |
| COPYRIGHT © | | YiiZeeLABS | A |
| VALUSE IN PARENTHESIS ARE CALCULATED AND MAY CONTAIN ROUND OFF ERRORS | | APPROX WEIGHT | kg |